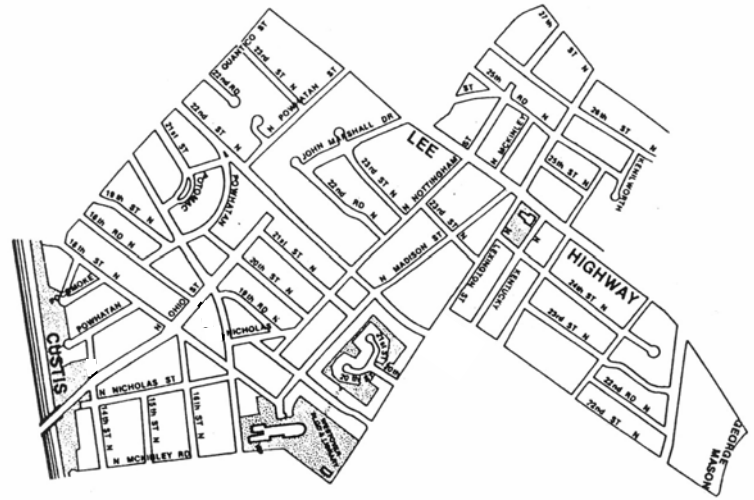


# The Leeway Overlee Leader

Published by the Leeway Overlee  
Civic Association  
<http://www.leewayoverlee.org/>



VOLUME 31, NUMBER 4

JANUARY 2010

## General Membership Meeting

Wednesday, January 20, 2010  
7:30 p.m. - - Reed School Multipurpose Room  
1644 N. McKinley Rd.

### Arlington Tax Increases and Local Service Cuts

*Featured Speaker*

**Richard Stephenson**  
Arlington Budget Director

*Refreshments provided*

## Tax Increases and Service Cuts Are Expected in 2010

A slump in commercial realty values in the County and a continued flat residential housing market are straining Arlington's operating budget for 2010. Increases in real estate tax rates are expected, as are cuts in some community services.

Our speaker, Mr. Richard Stephenson, is at the center of this internal debate. He has agreed to talk to the Leeway Overlee community about some of the service cuts being considered and the possible scope of local tax increases. The County's annual real estate assessments notices are due to be delivered to homeowners in mid January—which should help focus the discussion.

The meeting will be held in the multipurpose room of the new Reed School facility which shares the site with the new Westover Library.

Other business at the meeting: Review of the remaining chapters for an update to the Leeway Neighborhood Conservation Plan.

## Update of Conservation Plan for the Leeway Neighborhood is Underway

The current Leeway Neighborhood Conservation Plan was approved by the neighborhood and accepted by the County Board in 1993. An update of that plan is underway to reflect changes that have taken place in the



years since its publication. A plan update is also important to aid the neighborhood in its efforts to fund additional needed improvements to street rights of way and parkland in the Leeway area.

For neighborhood conservation purposes, Leeway is defined at that portion of the civic association boundaries that lies north of N. 22<sup>nd</sup> Street. The neighborhood conservation needs of the area south of N. 22<sup>nd</sup> Street are handled through the plan managed by the Highland Park-Overlee Knolls Civic Association. (See separate article on page 2 for information on this division.)

Several key chapters of the proposed plan update will be discussed at the January meeting. They cover land use and zoning, traffic and transportation, neighborhood conditions (i.e., curb, gutter, sidewalk & street lighting), and business conservation. The chapter drafts have been posted to the Leeway Overlee web site -- <http://www.leewayoverlee.org/>. Click on Leeway Neighborhood Conservation in the top bar. Also there is a copy of the current 1993 plan for comparison purposes and the several chapters of the draft plan discussed at our October meeting.

(See **Conservation Plan**, p. 3, col. 2)

# Which Civic Association Do I Belong to?

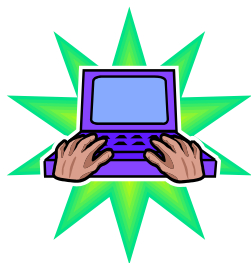
Some residents of the area receive newsletters from both the Highland Park/Overlee Knolls (HPOK) and Leeway Overlee civic associations. For newcomers this can be confusing. For residents north of N. 22<sup>nd</sup> Street, this is not a problem. Leeway Overlee has been the civic association for this area as far back as available records go. For those residing south of N. 22<sup>nd</sup> Street down to I-66, the situation is different. Both civic groups have supported the residents in this area for the past 30 years.

HPOK and Leeway Overlee have evolved to offer different services to residents in this area. HPOK operates a useful discussion listserv for the sharing of local news of community interest. It also organizes several community social gatherings during the year. Leeway Overlee offers an announcement listserv which provides periodic notices of upcoming events. It also sponsors the annual community day and yard sale event along the John Marshall/Ohio greenway early each June.

For neighborhood conservation purposes HPOK handles the prioritization of projects south of N. 22<sup>nd</sup> Street. Leeway Overlee does the same for the area north of that street. To avoid confusion the northern neighborhood conservation area is called "Leeway" to distinguish it from the broader boundaries of the Leeway Overlee Civic Association shown on the newsletter masthead.

The relations between the two civic groups are good. If you live in the "overlap" area, decide whether to join one civic group – or both. A personal recollection of how this overlap came to be is available on the Leeway Overlee web site – <http://www.leewayoverlee.org/>.

## Community News Via E-Mail



Do you want a day-in-advance reminder of civic association meetings? How about prompt notice of other local community issues that arise between newsletters? Your address is not

displayed to others when messages are sent. To be added to the addressee list, send your name and e-mail address to:

[leewayoverlee@hotmail.com](mailto:leewayoverlee@hotmail.com)

## LEEWAY OVERLEE CIVIC ASSOCIATION

### Officers

President:	Jennifer Michener	703-533-0754
Vice-President:	Pierre Boyer	703-532-1868
Secretary:	Ladd Connell	703-241-2422
Treasurer:	Karla Brown	703-536-8299

### Neighborhood Conservation Advisory Committee

#### Leeway

Representative:	Rob Swennes	703-532-6101
Alternate:	Michael O'Connor	703-237-5432

#### Highland Park/Overlee Knolls\*

Representative:	Bill Hamilton	703-531-0566
Alternate:		

\*The HPOK NC representatives are elected by the HPOK Civic Association.

### Arlington County Civic Federation

Delegates:	Ed Robinson, Jerry Auten, Pierre Boyer, Jennifer Michener
Alternates:	Vicki Howard, Carolyn Connell, Rob Swennes, Suzanne Idziak

*The Leeway Overlee Leader* is edited by Rob and Kathee Swennes (703-532-6101); distribution coordinator is Amy Appelbaum (703-241-8446). The association webmaster is Jim Mountain (703-536-4082). Articles and other news items can be mailed to the editors (6101 N. 22<sup>nd</sup> St. 22205) or sent by email ([khswnnes@gmail.com](mailto:khswnnes@gmail.com)).



**Ward Pest Control, Inc.**  
4625 Old Dominion Drive, Suite B1  
Arlington, VA 22207  
703-248-3631

Serving the D.C. Metropolitan area for over 30 years, we offer a full range of residential pest control services, including, termite treatments, warranties & wildlife management. Consumer groups rate us as one of the top firms for quality of service & pricing.

earth-friendly people-friendly landscape designs and installations

## Sustainability

GARDEN WALLS	OUTDOOR ROOMS
RAINGARDENS	WATER FEATURES
NATIVE PLANTS	WILDLIFE HABITATS
EDIBLE LANDSCAPES	GREEN ROOFS
NATURAL BUILDING	NATURAL PLAYSPACES

Nancy Striniste MLD 703-532-0018  
5827 19<sup>th</sup> St N, Arlington [nstriniste@earlyspace.com](mailto:nstriniste@earlyspace.com)

# Record December Snow Brought Lots of Work for Volunteer Snowmen

The record breaking snowstorm that struck this area on December 19 – 20 brought great sledding for children around the Washington area. It also brought headaches (and backaches) for adults who had to try and travel in the wintry conditions or remove the snow from their steps and sidewalks.

The County did a spotty job of clearing local streets with its snowplows. While some neighborhood streets were well plowed, others had little or no plowing. The clearing of local sidewalks was left to homeowners and to the Volunteer Snowmen organization that the civic association sponsors. These individuals have been trained by the County to use County-provided snow blowers that are of a size suitable for sidewalk cleaning.

This year the County provided only two blowers due to similar demands from other neighborhoods. In the past Leeway Overlee has received up to four snow blowers. Once the snow stopped, the volunteers began working to help clear public sidewalks, particularly on routes going to the East Falls Church Metro station. Sidewalk clearing is often more effective on streets like N. 22<sup>nd</sup> Street, since along major arterials like Washington Boulevard and Lee Highway, the County and VDOT snow plows often wind up dumping roadway snow onto the nearby sidewalks.

Though snow-free pedestrian access to the Westover area is also a goal, little of that route was cleared this time due to lack of volunteers as well as the limited equipment.

Thanks are due to our Volunteer Snowmen who donate their time and energy to this worthwhile winter project. If you have sidewalks along your street that do not get properly cleaned after a snowstorm, volunteer to become a Snowman and make a difference in your neighborhood. Call 703-532-6101 to volunteer.



Volunteer snowman at work

**LEEWAY OVERLEE CIVIC ASSOCIATION  
2010 MEMBERSHIP APPLICATION**

**Please complete this form and mail it with a check for \$5.00 per adult to Karla Brown, 2300 N. Nottingham St., Arlington, VA 22205. Make check payable to:**

**LEEWAY OVERLEE CIVIC ASSOCIATION**  
 **Check if you wish a receipt. Enclose a self-addressed, stamped envelope.**  
 **Check if you are willing to help with the distribution of THE LEEWAY OVERLEE LEADER.**

Name (s) \_\_\_\_\_

Address \_\_\_\_\_

Zip \_\_\_\_\_ Phone \_\_\_\_\_

E-mail address \_\_\_\_\_

Amount Enclosed \$ \_\_\_\_\_

*Thanks for your support!*

## Conservation Plan....from p. 1

Over a half dozen residents of the area have devoted time to collating the results of the neighborhood survey conducted two years ago and to drafting these chapters.

After initial community review, the chapters will be forwarded to Arlington County staff for additional review and feedback. Final approval of the plan by the Leeway community is expected at the civic association meeting in the spring. The plan must then be examined by the full Neighborhood Conservation Advisory Committee and endorsed forward to the County Board for adoption.

If you have questions or comments and are unable to make the coming civic association meeting, contact Cathy Mercil at 703-241-3743.

## COMMONWEALTH RESTORATIONS

Construction and Renovation • Since 1971

2430 SOUTH KENMORE STREET ARLINGTON, VIRGINIA 22206

COMMREST@AOL.COM

**(703) 525-5255**

## Community Notes

### East Falls Church Planning Study

A County task force has been meeting on this subject for over two years but has not met for several months. The purpose of its efforts is to create a land use and transportation vision for transit-oriented development in the East Falls Church area of Arlington County and the City of Falls Church. Changes adjacent to the Metro station are of particular concern to this neighborhood. A final Concept Plan and Policy Framework will be developed and presented to the Arlington County Board and City of Falls Church City Council for adoption upon completion of the project. The next task force meeting is scheduled for Wednesday, January 27, 2010. Those interested in attending are advised to call Richard Tucker, the County's staff liaison to the task force, at 703-228-0069 in order to learn the meeting's location and time.

### Bank Construction Progress

The new Toronto Dominion Bank branch is rising at the corner of Lee Highway and N. Illinois Street. Local residents are looking forward to this new commercial neighbor following several years of negative relations with the operators of the gas station that used to occupy the corner. This bank seems to value community relations highly and has committed funds for street improvements on N. Illinois. It has agreed to good screening between the bank property and the adjacent residential properties. The branch is scheduled to open in the first half of 2010.

### Census Takers Needed

Every 10 years the United States performs a detailed census of its population. The results help determine how federal and state funds are spent in the community on things like roads, parks and other public services. Census results also affect a community's representation in government. The 2010 Census will require the employment of thousands of people across the country. Temporary census workers are now being recruited. The job offers good pay, flexible hours, paid training, and the chance to work independently in your own community. For more information, including a practice test, contact [www.2010censusjobs.gov](http://www.2010censusjobs.gov) or call 1-866-861-2010.

### Traffic Improvements near Harrison Street Shopping Center

The County has completed installation of the left turn lanes on Lee Highway at N. Harrison Street. This project has been in the works for a decade or more. Traffic on Lee Highway regularly backed up for years due to turning vehicles stopped in the left hand lane. A similar problem existed further east on the highway at N. George Mason Drive. Substantial coordination with the Virginia Department of Transportation (VDOT) was required since Lee Highway is a state-controlled roadway. Some right of way also needed to be acquired for the turn lanes to be installed. These are major improvements to ensure the steady flow of traffic along this arterial.

#### SIRI BAUER, CPA

A Professional Corporation  
Certified Public Accountant

5633 Lee Highway      Tel: (703) 533-0992  
Arlington, VA 22207      Fax: (703) 533-8258

E-mail: [siribauercpa@hotmail.com](mailto:siribauercpa@hotmail.com)

Accounting and Tax Services

#### Finders Keepers, LLC

Consignments Welcome: We Buy and Sell

Gary & Stephanie George



5900 N. Washington Blvd.  
Arlington, VA 22205

(703) 241-9227  
(240) 346-1282

[finderskeepersllc@gmail.com](mailto:finderskeepersllc@gmail.com)  
[www.finderskeepershome.com](http://www.finderskeepershome.com)

#### Master's Service, Inc. Plumbing

Residential Service and Repair  
Virginia Code Instructor  
(703) 525-3399

**Lyman D. Stutzman**      Licensed and Insured  
Arlington, VA 22201      Sr. Citizens Discounts



**BECKY'S  
PET CARE INC.**  
QUALITY SERVICE FROM  
A TRUSTED FRIEND

Fax: 703-822-0935  
[www.beckypetcare.com](http://www.beckypetcare.com)

703-822-0933  
[info@beckypetcare.com](mailto:info@beckypetcare.com)